

# V5B Lubricator

## Automatic Continuous



### Operation

The V5B Lubricator consists of a motor-driven gear pump with a controlled constant volume discharge. The fully automatic lubricating system is preset by the machine manufacturer for best operation. Discharge volume may be adjusted by turning the bypass valve counter-clockwise to reduce the pressure and thus automatically reduce the amount of oil, or by closing valve to increase pressure and oil flow.

### Technical Data

Motor	1/20 hp, NEMA Frame L330, totally enclosed, non-ventilated*
Voltage	115 VAC
Frequency	60/50 Hz
Speed	1725/1425 rpm (60/50 Hz)
Start Amperage	2.3/2.5 amp
Run Amperage	0.78/0.67 amp (60/50 Hz)
Maximum Ambient Temperature	104°F (40°C)

\* Also available with totally enclosed fan cooled motor.

### Discharge Adjustment

Lubricator is preset with bypass valve closed for maximum discharge of 132cc per minute (110cc with a 50 cycle motor). With lubricator at normal operating temperature on machine, desired discharge volume is obtained by adjusting the bypass to pre-calculated pressure on system pressure gauge (see *Bijur Engineering Manual*). Pressure is limited internally to 130 psi by a relief valve.

### System & Limitations

Use Type C control units. Viscosity range is 100 to 10,000 SSU at operating temperature. See *Bijur Engineering Manual* for system limitations.

### Startup Instructions

1. Fill reservoir with oil.
2. Start machine and see that oil flows at all bearings.



#### ATTENTION

Use clean oil only of the type and viscosity recommended by machine manufacturer.

#### ATTENTION

Replace filter group annually.

#### BIJUR DELIMON INTERNATIONAL

(919) 465 4448 LOCAL  
(800) 631 0168 TOLL-FREE  
(919) 465 0516 FAX

[WWW.BIJURDELIMON.COM](http://WWW.BIJURDELIMON.COM)

2250 Perimeter Park Dr., Suite 120  
Morrisville, NC 27560

## Maintenance

Check oil level daily and refill reservoir when required. Check the system periodically for loose or broken tubing, worn hoses, loose fittings and connections. Replace filter group annually.

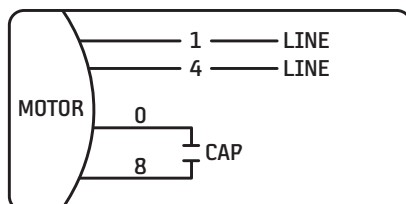
### Filter Replacement

125 micron porous metal filter on pump inlet, which should be inspected periodically and replaced as required (recommended annually). For replacement of filter element, specify filter group part #S-222.

### Motor Replacement

1. Disconnect the electrical supply from the motor, disconnect system tubing and remove lubricator unit from the oil reservoir by opening the four M5 screws that are connecting the pump to the top plate.
2. Turn the lubricator unit upside down.
3. Remove the two M4 SHC screws holding the gear pump to the downspout and remove the gear pump and inlet gear pump adapter. Remove the three #8-32 socket cap screws holding the downspout onto the motor and lift the downspout clear from the motor. Carefully remove the motor driveshaft and coupling.
4. Replace the motor and carefully re-assemble the motor driveshaft / motor coupling onto the new motor shaft. The motor coupling must be equally spaced between the motor driveshaft and the motor shaft.
5. Re- assemble the downspout onto the motor by carefully lining up the three holes and inserting and tightening the three #8-32 socket cap screws.
6. Re-assemble the gear pump to the downspout, ensuring that the shaft of the gear pump meshes with the motor driveshaft. Place the inlet gear pump adaptor and O ring onto the gear pump and then insert the two M4 SHC screws to hold in place.

### Motor Wiring - 115vac Single Phase



BIJUR DELIMON INTERNATIONAL

(919) 465 4448 LOCAL  
(800) 631 0168 TOLL-FREE  
(919) 465 0516 FAX

[WWW.BIJURDELIMON.COM](http://WWW.BIJURDELIMON.COM)

2250 Perimeter Park Dr., Suite 120  
Morrisville, NC 27560

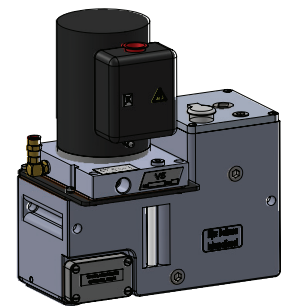
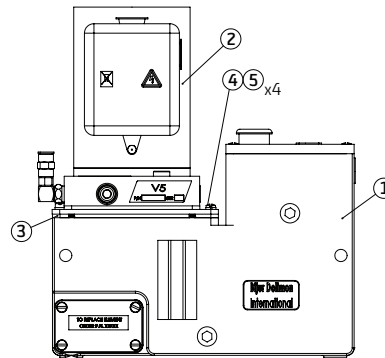
## How to Order

Name	Motor	Reservoir Capacity	Part #
V5B Lubricator	Single phase, 115 VAC	TENV	1/2 gallon 60443
		TEFC	1/2 gallon 70618

When ordering, specify name, motor, reservoir capacity and part number, e.g. V5B Lubricator, single phase, 115 VAC, TENV, 1/2 gallon Reservoir, Part #60443.

### Service Parts 60443

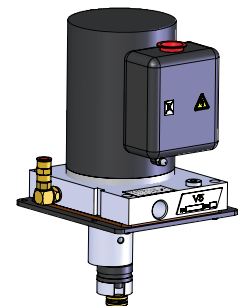
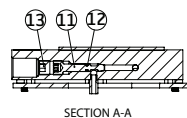
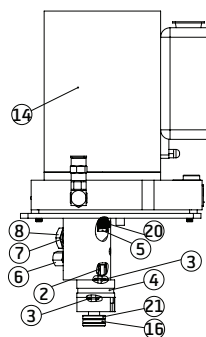
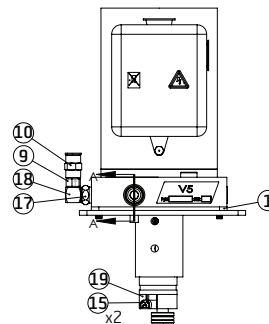
Item #	Description	Part #
1	Reservoir Assembly	D2559-1
2	Pump & Motor Assembly	60651
3	Gasket	B6903-1
4	Lock Washer M5 (X4)	HW310
5	Screw HD 10-32 (X4)	HS123



60443 V5B Lubricator

### Service Parts 60651

Item #	Description	Part #
1	Gasket	B6903-1
2	Driveshaft Sleeve	25931
3	O-Ring (X2)	34630
4	Gear Pump	25937-1
5	Motor Driveshaft	29170
6	Relief Valve 130 PSI	B6898
7	Copper Washer	20913-3
8	Brass Plug M12X1	23422
9	Check Valve 2 LB.	B5880
10	Coupling 1/8NPTF	B6539
11	Bypass Adjustment Screw	23958
12	O-Ring	H0412
13	Locking Nut	23957
14	Motor 115VAC TENV	36400
15	Screw M4x30	AV15804030
16	O-Ring	H0406
17	Thread Adapter	B6131
18	Elbow 1/8 NPT	A2768
19	Pump Inlet Adapter	60715-1
20	Motor Coupling	60272
21	Inlet Connector	60864-1



60651 Pump & Motor Assembly

### ATTENTION

Previous generation V5B Pump & Motor D2944 will not fit the current generation D2559-1 reservoir.

Current generation V5B Pump & Motor 60651 will not fit the previous generation D2559 reservoir.

### BIJUR DELIMON INTERNATIONAL

(919) 465 4448 LOCAL  
(800) 631 0168 TOLL-FREE  
(919) 465 0516 FAX

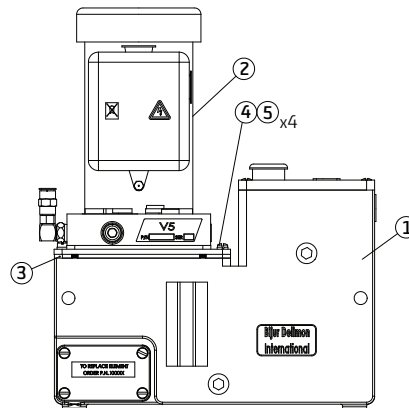
[WWW.BIJURDELIMON.COM](http://WWW.BIJURDELIMON.COM)

2250 Perimeter Park Dr., Suite 120  
Morrisville, NC 27560

36734 • R0 04/17

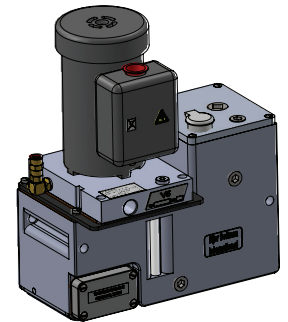
### Service Parts 70618

Item #	Description	Part #
1	Reservoir Assembly	D2559-1
2	Pump & Motor Assembly	70617
3	Gasket	B6903-1
4	Lock Washer M5 (X4)	HW310
5	Screw HD 10-32 (X4)	HS123

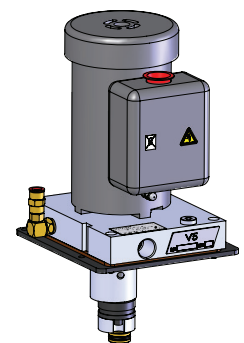


#### ATTENTION

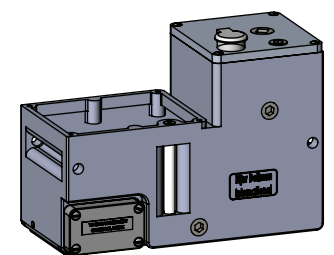
Previous generation VSB Pump & TEFC Motor will not fit the current generation D2559-1 reservoir.  
Current generation VSB Pump & Motor 70617 will not fit the previous generation D2559 reservoir.



70618 VSB Lubricator



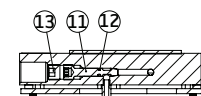
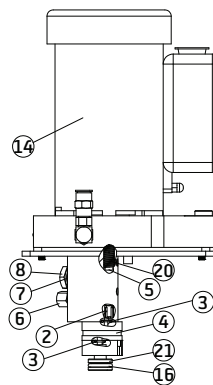
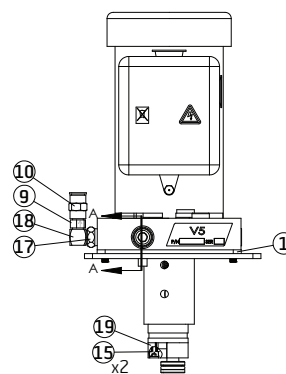
70617 Pump & Motor Assembly



D2559-1 Reservoir Assembly

### Service Parts 70617

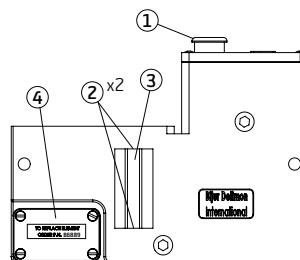
Item #	Description	Part #
1	Gasket	B6903-1
2	Driveshaft Sleeve	25931
3	O-Ring (X2)	34630
4	Gear Pump	25937-1
5	Motor Driveshaft	29170
6	Relief Valve 130 PSI	B6898
7	Copper Washer	20913-3
8	Brass Plug M12X1	23422
9	Check Valve 2 LB.	B5880
10	Coupling 1/8NPTF	B6539
11	Bypass Adjustment Screw	23958
12	O-Ring	H0412
13	Locking Nut	23957
14	Motor 115VAC TEFC	60361
15	Screw M4x30	AV15804030
16	O-Ring	H0406
17	Thread Adapter	B6131
18	Elbow 1/8 NPT	A2768
19	Pump Inlet Adapter	60715-1
20	Motor Coupling	60272
21	Inlet Connector	60864-1



SECTION A-A

### Service Parts D2559-1

Item #	Description	Part #
1	Filler Cap	HF703
2	Seal Washer for Sight Tube (X2)	17277
3	Sight Tube	B6958
4	Replacement Filter	B6889



#### BIJUR DELIMON INTERNATIONAL

(919) 465 4448 LOCAL  
(800) 631 0168 TOLL-FREE  
(919) 465 0516 FAX

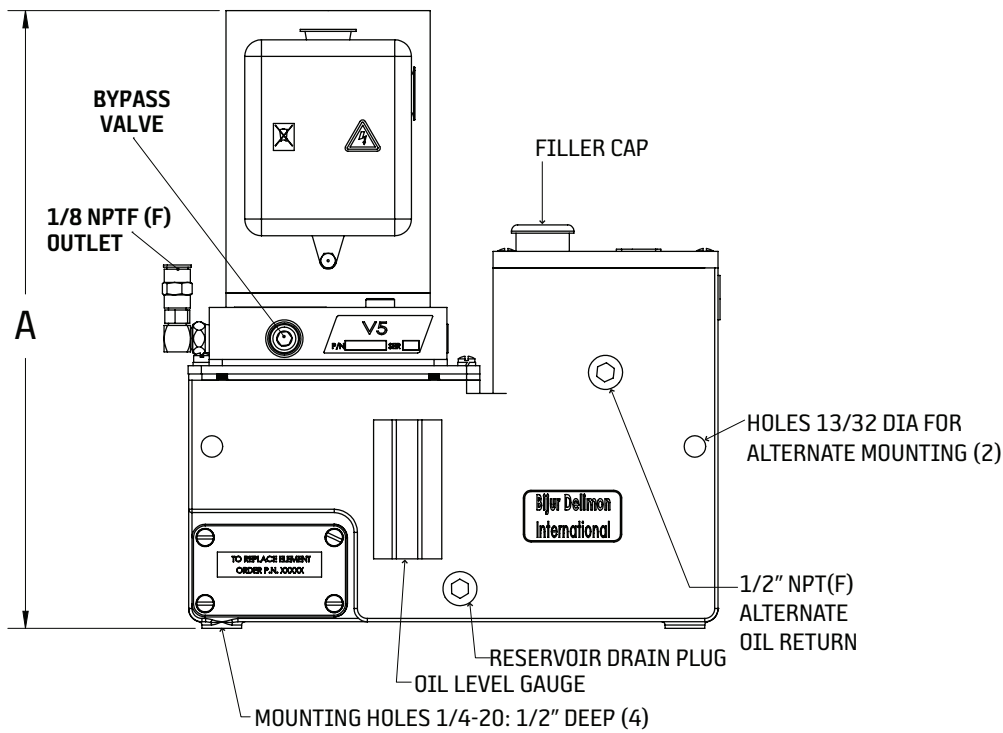
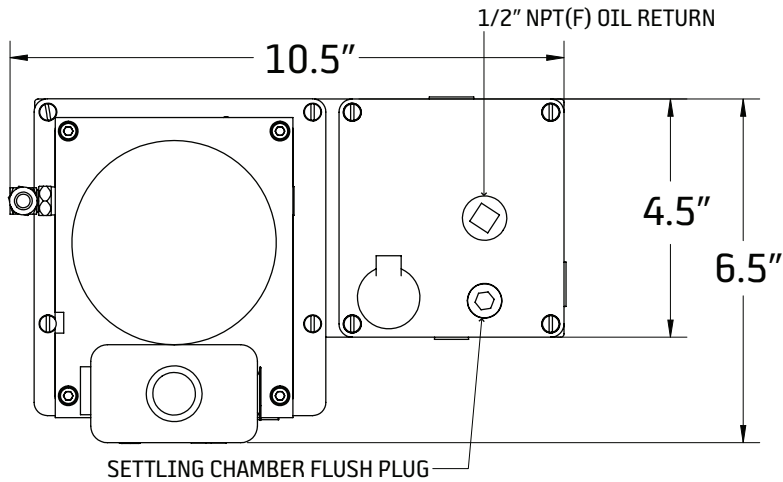
[WWW.BIJURDELIMON.COM](http://WWW.BIJURDELIMON.COM)

2250 Perimeter Park Dr., Suite 120  
Morrisville, NC 27560

36734 • R0 04/17

**Dimensional Schematics**

Measurements shown in inches.



Part #	A
60443	11.35" (288mm)
70618	12.5" (317mm)

**BIJUR DELIMON INTERNATIONAL**

(919) 465 4448 LOCAL  
(800) 631 0168 TOLL-FREE  
(919) 465 0516 FAX

[WWW.BIJURDELIMON.COM](http://WWW.BIJURDELIMON.COM)

2250 Perimeter Park Dr., Suite 120  
Morrisville, NC 27560